

# Marijuana Concerns

---

**Community Awareness**

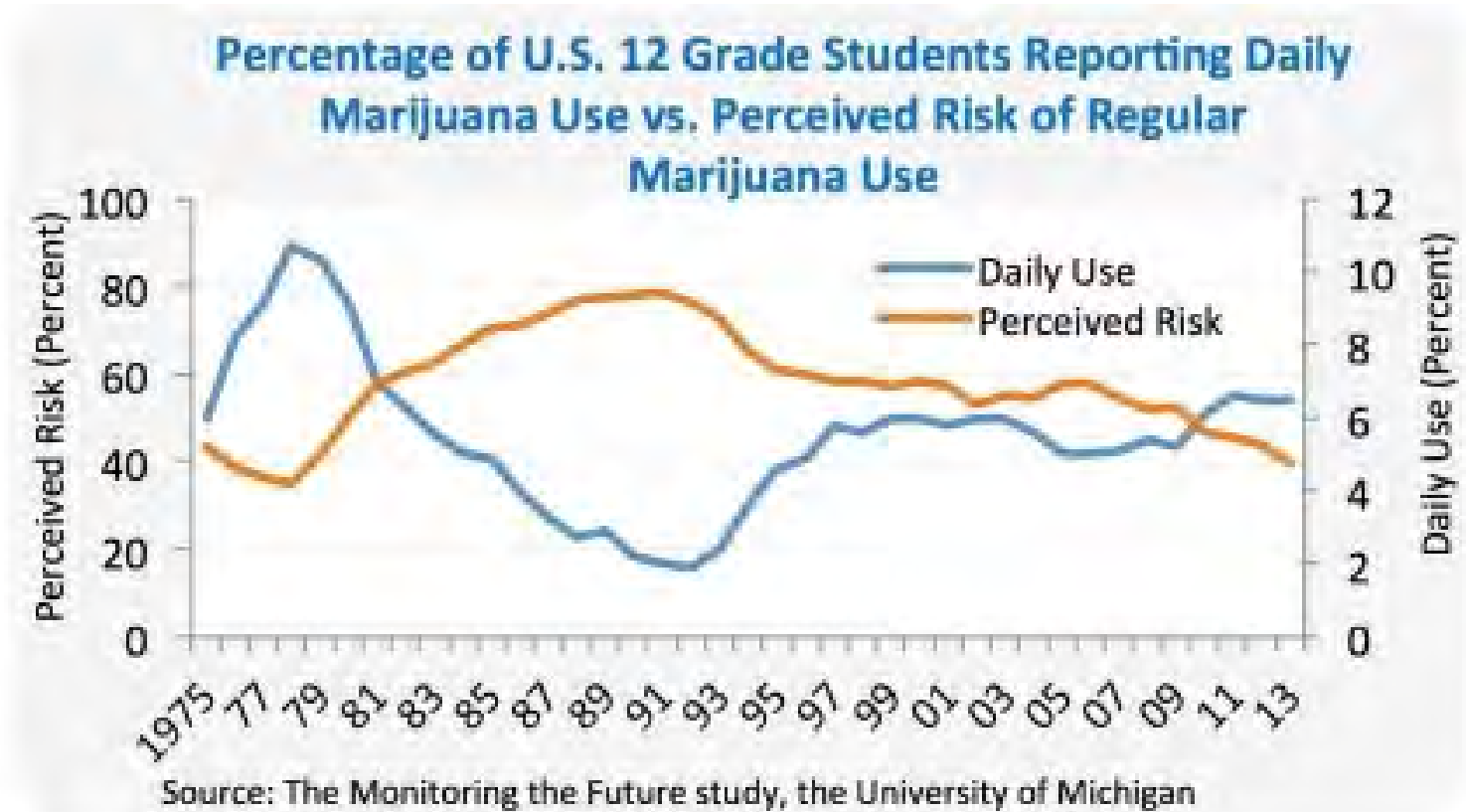
**Peter Ninemire, LSCSW**

The Caring Center of Wichita

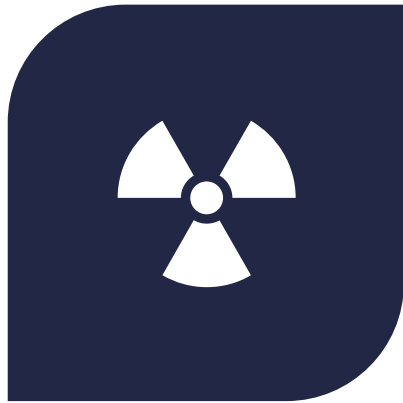
April 2020

# Environment: Risk Factor

- Perception of risk
- Parents and family
- Access to drugs
- Peer networks
- Community attitudes
- Consequences
- Role models



# Marijuana Myths



NOT HARMFUL



NOT ADDICTIVE



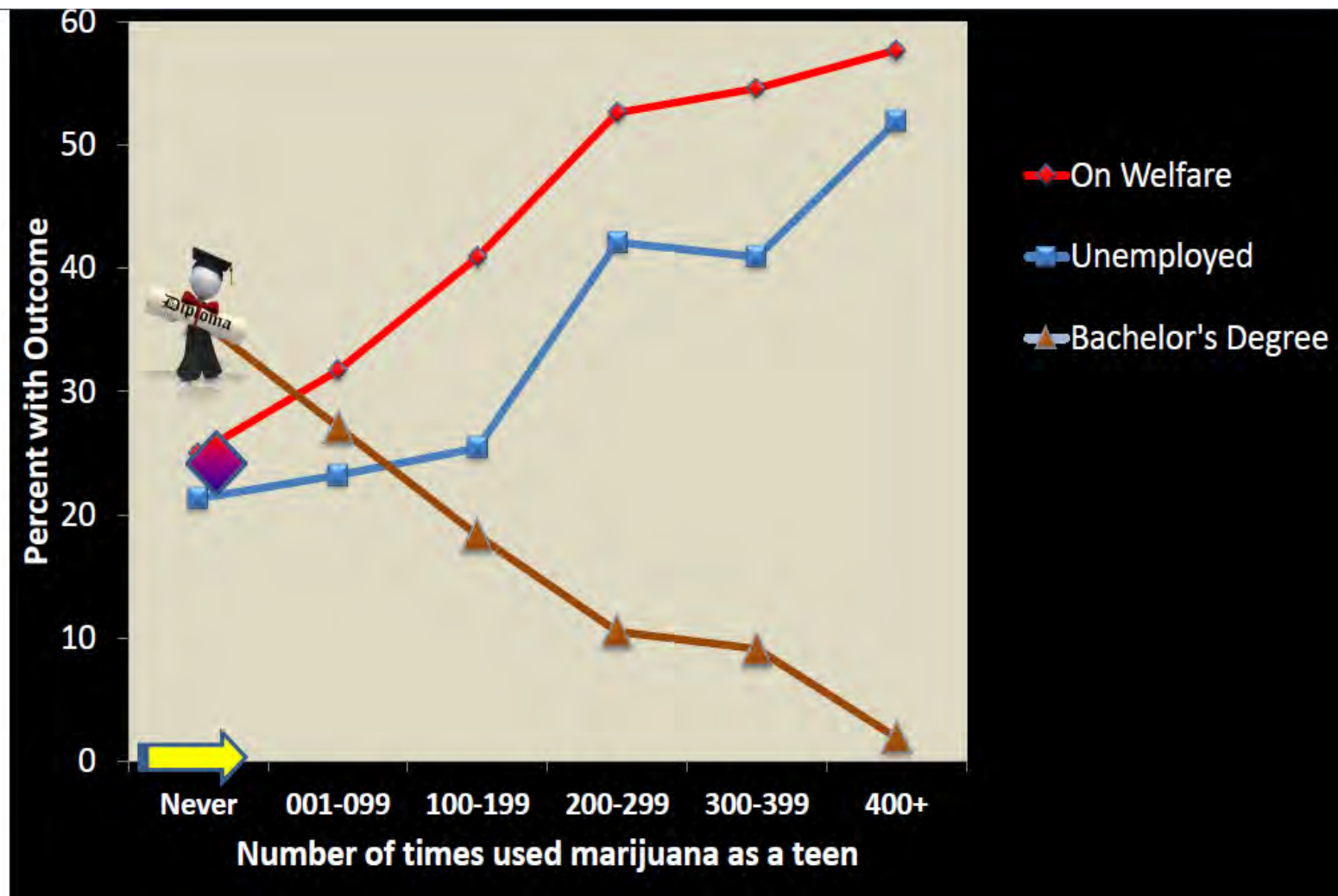
NO WITHDRAWAL

# Cannabis Addiction Risk

Users	Ratio	Percent
All Users	1:10	10%
Mid-Teen	1:6	17%
Daily Use	1:2-3	30-50%

*Courtesy Harvard Medical School*

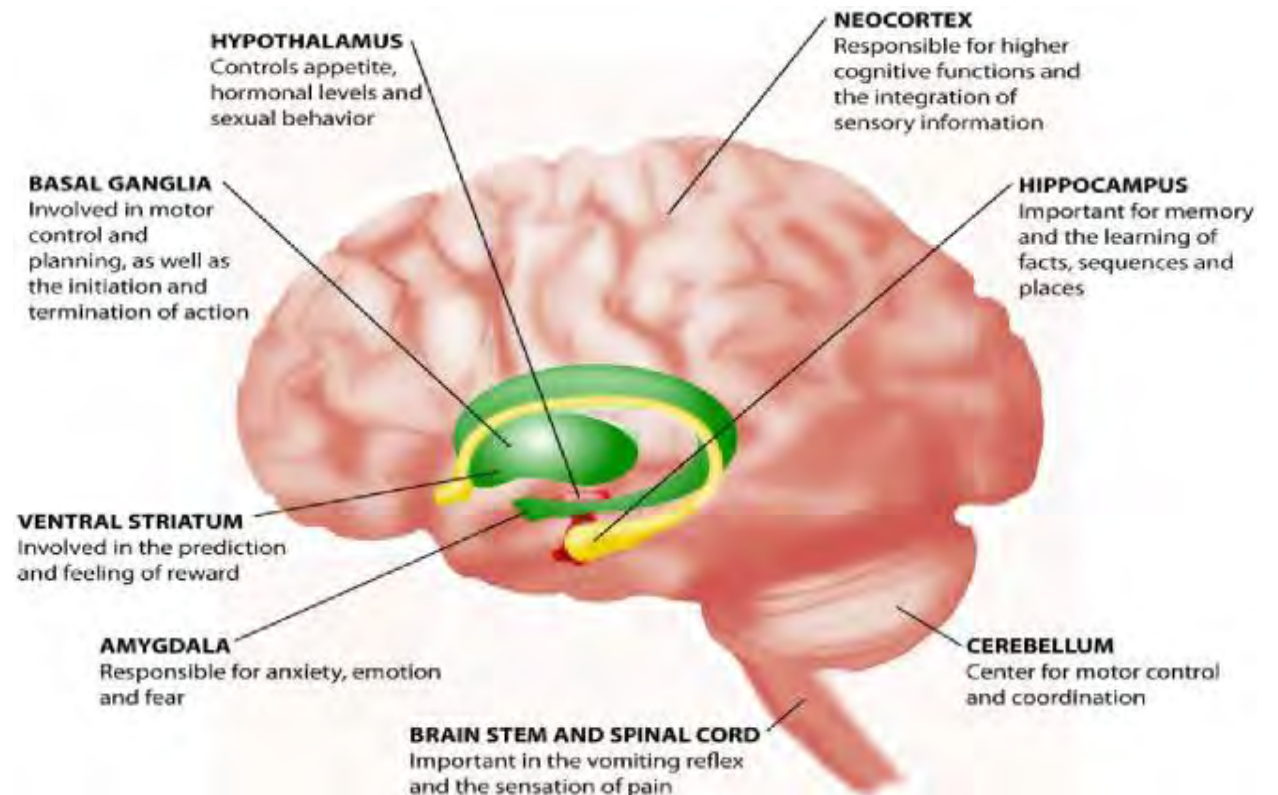
# Teen marijuana use affects adult motivation



Courtesy Harvard Medical School

# Marijuana intoxication impairs higher brain function

- Impairs **learning, working memory**
- Reduces **attention span and concentration**
- Reduces **ability to plan**
- Reduces **organizational skills**
- Reduces **problem solving**
- Reduces **decision making**
- Reduces **perception of facts**
- Reduces **emotional control**
- Reduces **behavioral control**
- Impairs **motor coordination**
- Increases **impulsivity**
- Increases **hunger**



# Marijuana is Harmful!



## Acute

Anxiety  
Psychosis



## Persistent

Impaired learning  
Sleep problems



## Cumulative Risks

Addiction  
Schizophrenia

# Psychological Impact

As the disease progresses, patients have difficulty managing their feelings, thinking, and controlling their behavior.

They also may drink or do drugs to cope with feelings of depression, anxiety, or low self-esteem.



# Psychological Impact

Chasing relief with a response  
that leads to distress

## Patient Quote

“I was using marijuana to relieve stress and it became my biggest stressor”

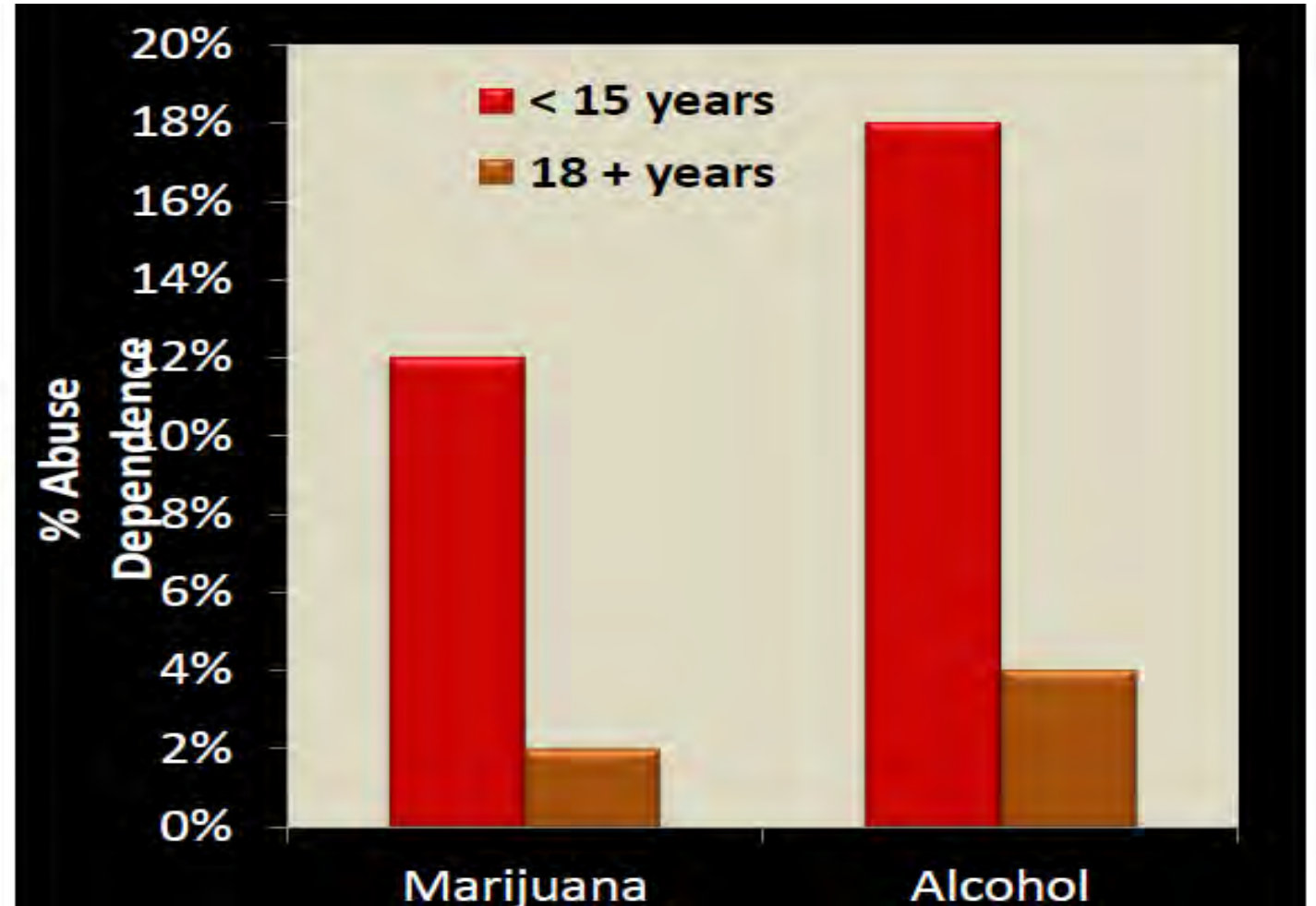
# Psychological Impact

Adolescence appears to be a time of increased sensitivity to stress, which worsens each time substances are used to relieve stress.

(Simpkin)

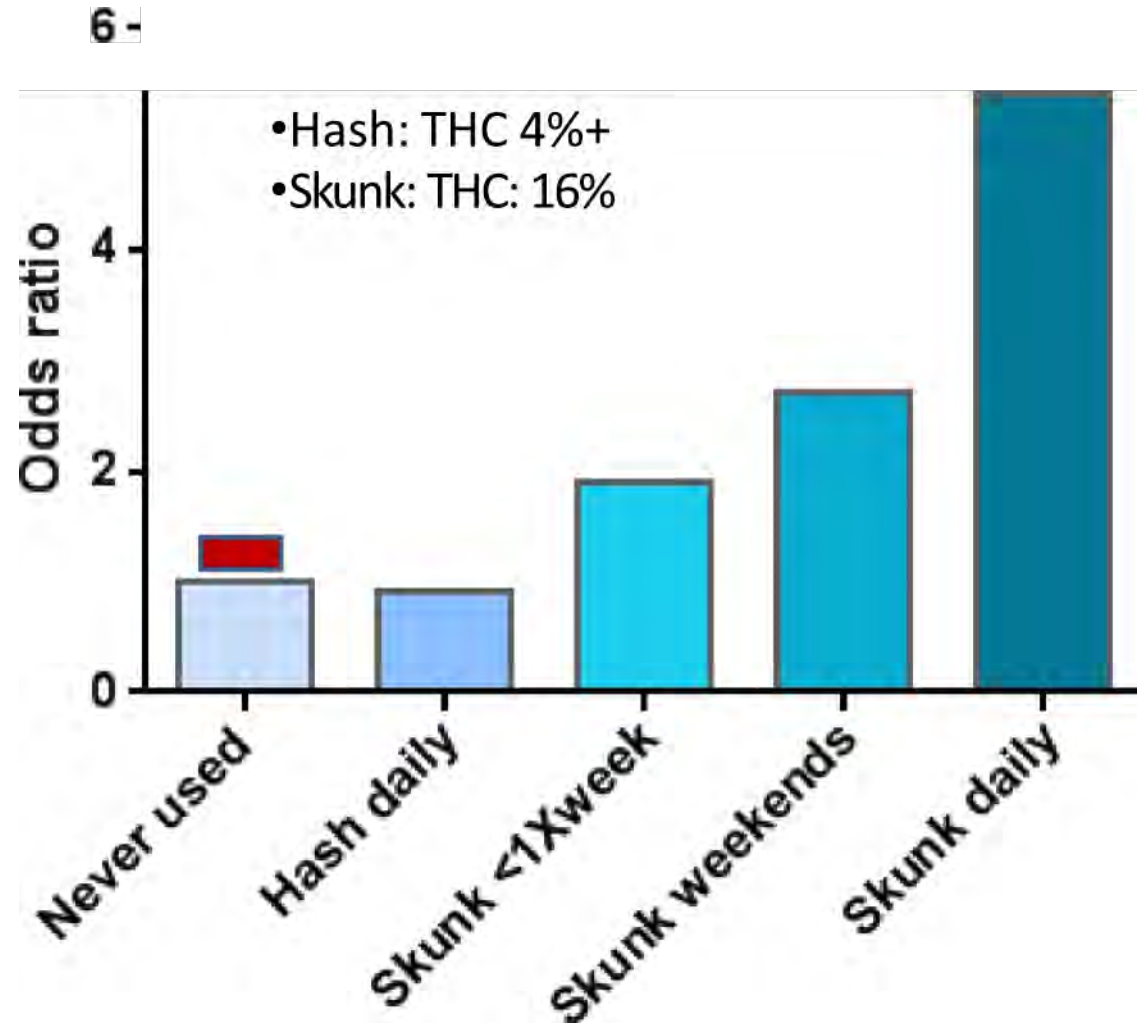
# Risk of Initiation

- Nicotine
- Alcohol
- Marijuana
- Inhalants
- Simulants
- Cocaine
- Opioids
- Hallucinogens
- Anxiolytics



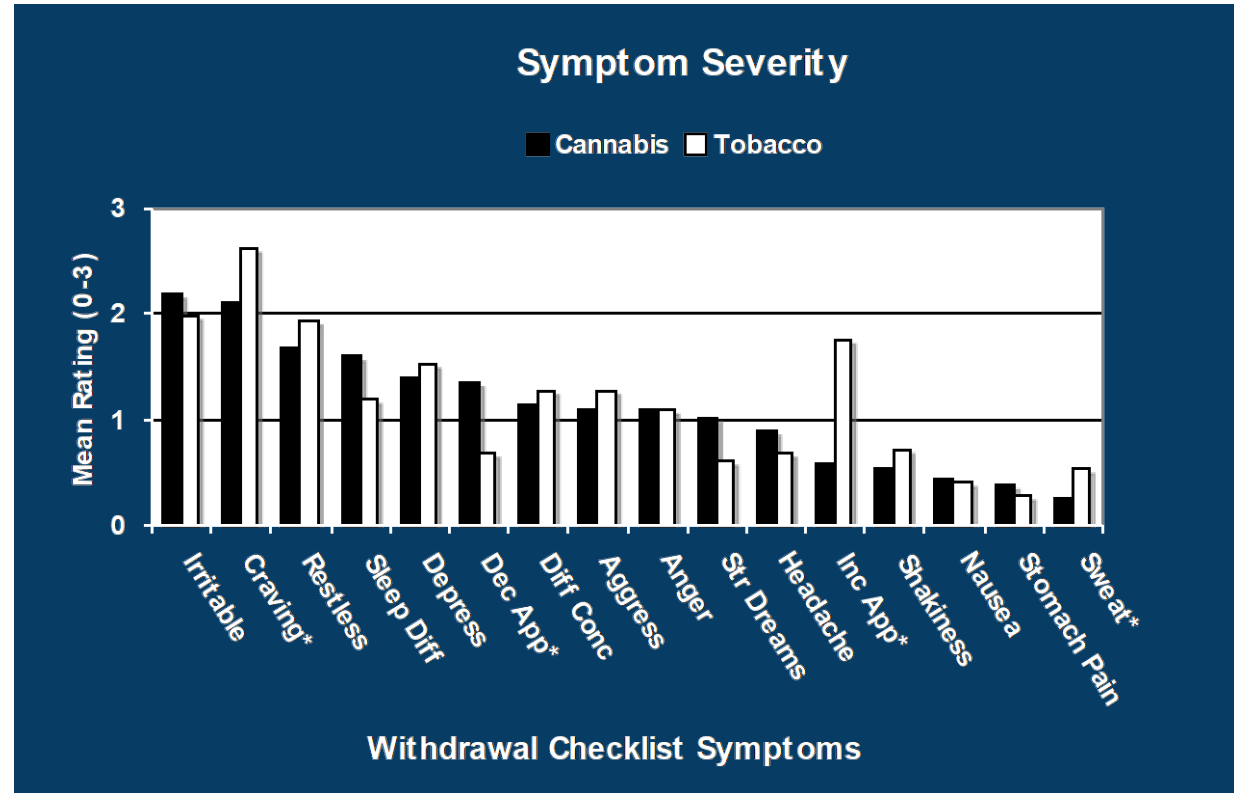
*Courtesy SAMHSA 2013 National Drug Study*

# Strength and frequency of marijuana use increases risk of psychosis



Di Forti et al Proportion of patients in south London with first-episode psychosis attributable to use of high potency cannabis: a case-control study. *The Lancet Psychiatry* 2:233-238, 2015

# Comparing Cannabis and Tobacco Withdrawal



Vandrey et al., 2005; Vandrey et al. 2008, Budney et al., 2009

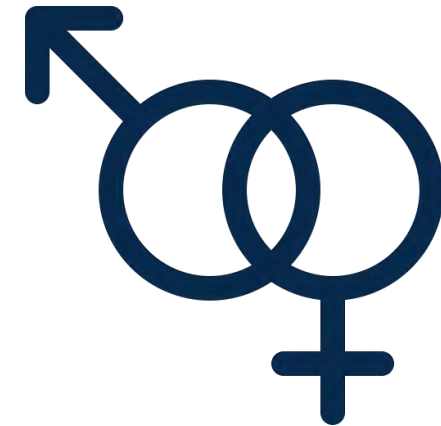
# Children at Risk



Adolescent



Developing fetus



THC Exposure  
before conception

# Marijuana exposure in developing fetus:

## Association with developmental problems

### Fetus



- Infertility
- Placental problems
- Low birth weight

### Birth



#### Birth - 1 month

Increased tremor, startle

#### 9 months

Impaired mental development

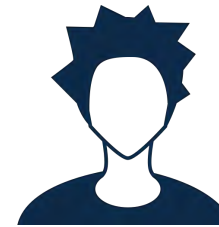
### Adolescent



#### 3-6 years

- Inattention
- Impulsivity
- Hyperactivity
- Impaired memory
- Behavioral problems

### Teen



#### 14-21 years

- Increased risk of smoking
- Increased risk of marijuana use

### Young Adult



#### 19-21 years

- Altered brain function during memory task
- Increased incidence of schizophrenia
- Increased risk of addiction

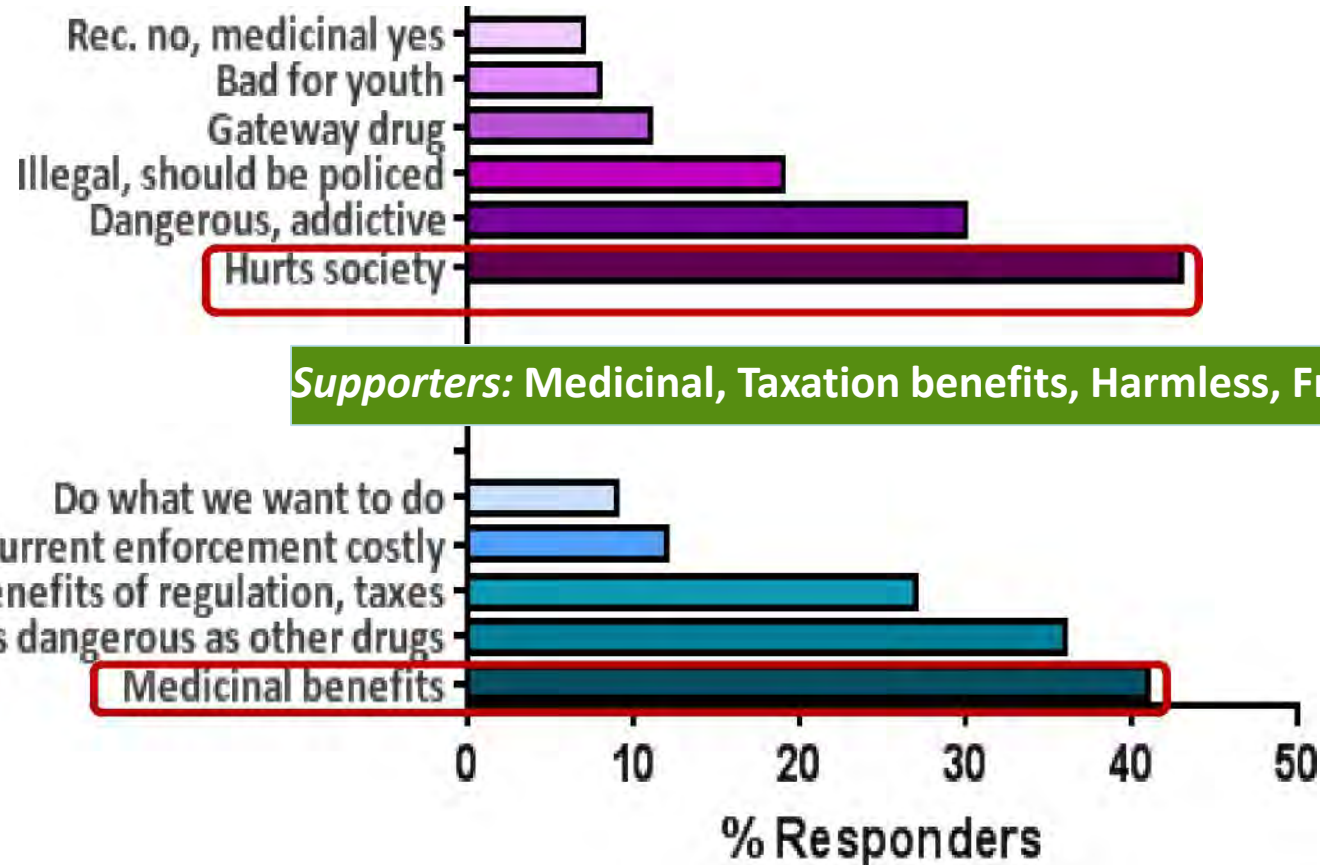
# 29 States legalized Medical Marijuana





# Reasons for legalizing marijuana

**Opponents: Dangers to Individuals, Society, to Youth, Addictive**



**Supporters: Medicinal, Taxation benefits, Harmless, Freedom**

# Sedgwick County Drug Misuse Information

A Guide to Local Data and Resources

